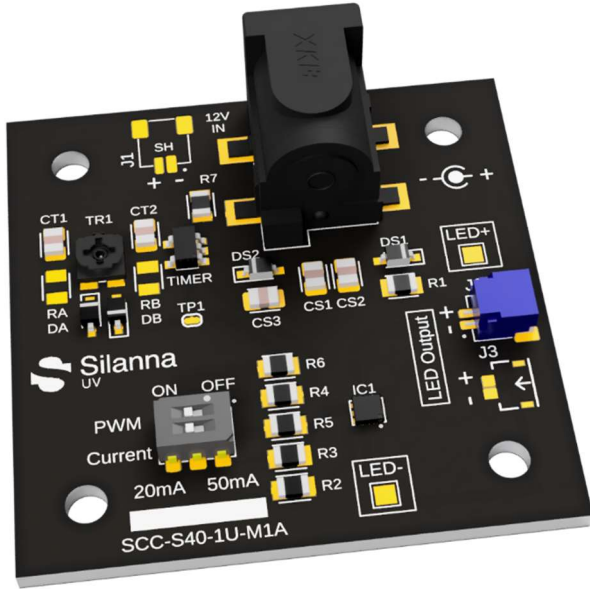


Constant Current Driver Board



SCC-S40-1U Single Emitter Constant Current Driver Board

The Silanna SCC Series Constant Current Driver Board is a plug-and-play reference solution to efficiently operate Silanna's UVC-LED at 20mA or 50mA operating current. It features a metal core PCB for low thermal resistance.

UVC LED Applications:

- Air, water, and surface disinfection
- Chemical and biological analysis
- Water quality monitoring
- Gas Sensing
- Liquid Chromatography

Features:

- User selectable UV-LED drive current of 20mA & 50mA.
- Selectable Dimming circuit and adjustable using on-board trim-pot to vary the duty cycle of Pulse Width Modulation (PWM).
- Uses Metal Core PCB (MCPCB) for excellent thermal performance.
- Operate on a 12V DC power adaptor with Ø5.5mm barrel jack, with Input polarity protection for circuit protection.
- Dimension: 40mm x 40mm x 12.5mm.
- Mounting hole: 30mm x 30mm x Ø3mm
- Used for powering Silanna's LED such as
 - 235nm Flat window (SF1-3C3FWL1-TR)
 - 235nm 30D parabolic lens (SF1-3U8P3L1-TR)
 - 235nm 15D Ball lens (SF1-3T9B5L1-TB)
 - 255nm Flat Window (SN3-5C3FWL1-TR)
 - 255nm 30D Parabolic Lens (SN3-5U8P3L1-TR)
 - 255nm 15D Ball Lens (SN3-5T9B5L1).

How to order:

Please contact [sales](mailto:Sales_UV@silanna.com) (Sales_UV@silanna.com) to discuss the different variants available that would suit your application.

Silanna PN	Product Description
SCC-S40-1U-M1A	Single Emitter Constant Current Driver Board

Board Specification

Parameter	Symbol	Minimum	Typical	Maximum	Unit
Operating temperature range	T_A	0	25	55	°C
Forward current (20mA at 25°C)	I_F	18	-	20	mA
Forward current (50mA at 25°C)	I_F	45	-	50	mA
I_F stability over a fixed temperature	$(I_{Fset} - I_F) / I_{Fset}$	-	3	5	%
Board supply voltage	V_{in}	$V_F + 3.5$	12	22	V
I_F vs Temperature	$(\Delta I_{OUT} / I_{OUT}) / ^\circ C$	-	-0.2	-	%/°C
Dimming Frequency			952		Hz

V_F – LED Forward Voltage

